



# INTERNATIONAL

NAME PLATE SUPPLIES LTD.





## ABOUT US

- **INTERNATIONAL NAME PLATE SUPPLIES LTD FORMED IN 1966**

- **CURRENT FACILITIES IN:**

**CANADA** LONDON, ONTARIO

**USA** LONGVIEW, TEXAS  
BROOKLYN, NEW YORK  
FLORENCE, ALABAMA

**MEXICO** MATAMOROS, TAMAULIPAS  
MONCLOVA, COAHUILA





## ABOUT US

### INPS SERVICES

- ENGINEERING & CONCEPTUAL DESIGN
- PROTOTYPING & TESTING
- GRAPHIC DESIGN & ARTWORK (PC & MAC)

### INPS ONGOING SUPPORT

- 24 HR PRODUCTION 6 DAYS A WEEK
- INSTALLATION BY INPS
- BRIEFING & CO-ORDINATION OF SUB-CONTRACTORS
- TESTING
- MAINTENANCE



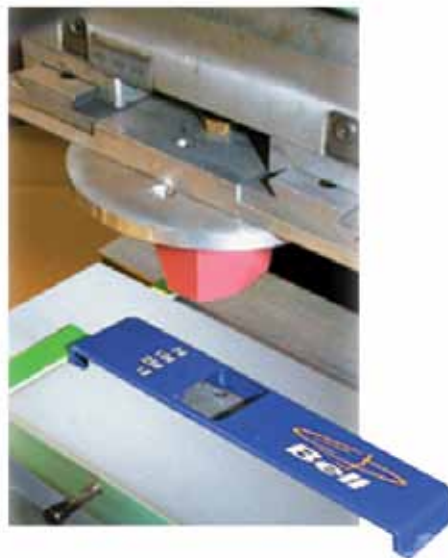


# IN HOUSE PROCESSES

## SCREEN PRINTING



## PAD PRINTING



## LARGE FORMAT DIGITAL PRINTING





# IN HOUSE PROCESSES

VINYL CUTTING



DIE CUTTING



EMBOSSING





# IN HOUSE PROCESSES

## LASER ENGRAVING



## ENGRAVING



## ANODIZING



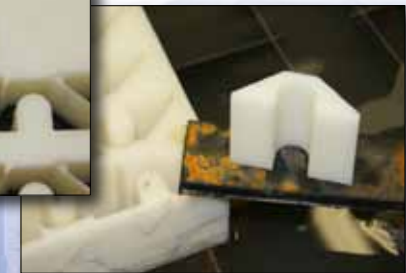


# IN HOUSE PROCESSES

## CNC CUTTING



## WATERJET CUTTING





# IN HOUSE PROCESSES

## VACUUM FORMING



## INJECTION MOLDING



## EXTRUSIONS







# IN HOUSE PROCESSES

**PAINTING**



**CLEAR COATING**



**LED LIGHTING**





# INPS SUPPLIES

## OEM



## RAILROAD GRAPHICS



## TRANSPORTATION & FLEET GRAPHICS



## MILITARY



## PROPERTY



## PROMOTIONAL, RETAIL & P.O.P



## INSTALLATION & SERVICES



## MASS TRANSIT PRODUCTS





# OEM PRODUCTS

DECALS

CONTROL PANELS

SAFETY LABELS

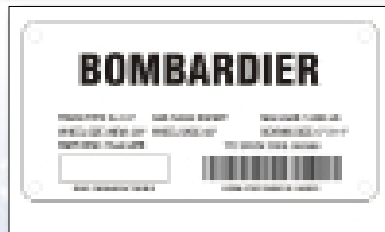
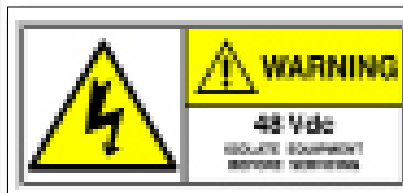
NAME PLATES

CUSTOM SOLUTIONS





# OEM PRODUCTS





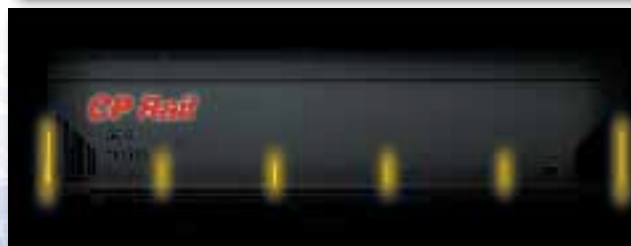
# OEM PRODUCTS





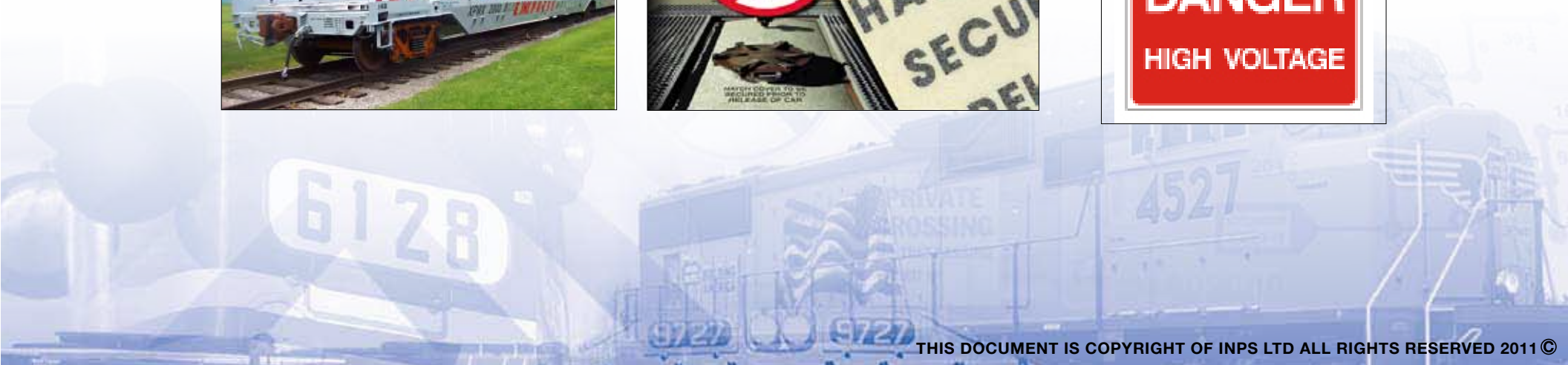
# RAILROAD GRAPHICS

LOCOMOTIVE - INTERIOR & EXTERIOR  
RAILCAR DECALS & KITS  
RAILCAR REFLECTORS  
MAINTENANCE OF WAY





# RAILROAD GRAPHICS





# TRANSPORTATION & FLEET GRAPHICS

**VEHICLE GRAPHICS**

**REFLECTIVE STRIPING**

**VINYL DECALS**

**PLATES & PANELS**

**CUSTOM LOGOS**

**MAGNETIC**

**FULL VEHICLE WRAPS**



Winner of the 2008  
VEHICLE GRAPHIC  
DESIGN AWARD  
Straight Truck Category



6128

PRIVATE CROSSING  
9727

4527





# TRANSPORTATION & FLEET GRAPHICS





# MILITARY

## UID LABELS



LAV-25 A2  
CONTRACT NO. W56HZV-06-C-0255

(17V) SPLR ID CAGE 56161

(1P) SPLR PART 10666117-011

(S) SERIAL LAV-0849-H07

REGISTRATION NO. 531319 U.S. PROPERTY

56161-10675617-001





# PROPERTY

CITIES & MUNICIPALITIES / COMMERCIAL, REAL ESTATE, ETC...

## CITIES & MUNICIPALITIES

STREET SIGNS

DIRECTIONAL

PARKING

POSTS & HARDWARE



## COMMERCIAL, REAL ESTATE, INSTITUTIONS & SERVICE INDUSTRY

LAWN SIGNS

AGENT IDENTIFICATION

CUSTOM LOGO & LETTERING





# PROPERTY

CITIES & MUNICIPALITIES / COMMERCIAL, REAL ESTATE, ETC...





# PROMOTIONAL, RETAIL & P.O.P.

BANNERS

DISPLAYS

SIGNS

POSTER FRAMES & POSTERS

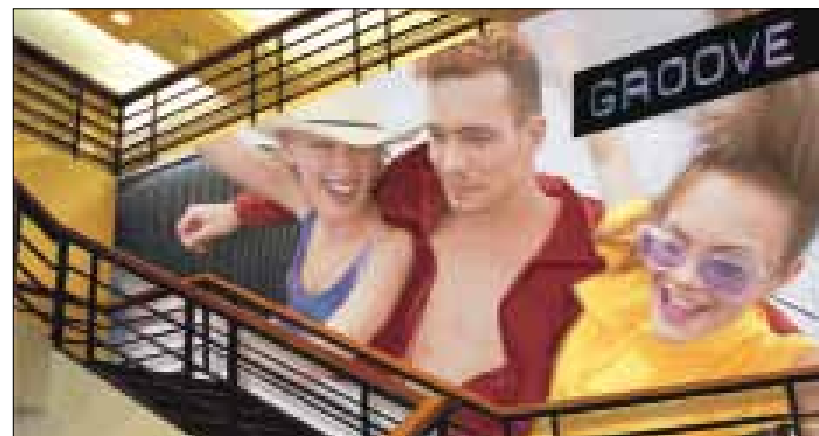
WINDOW CLINGS

TEXTURED SURFACE DECAL





## PROMOTIONAL, RETAIL & P.O.P.





# MASS TRANSIT PRODUCTS



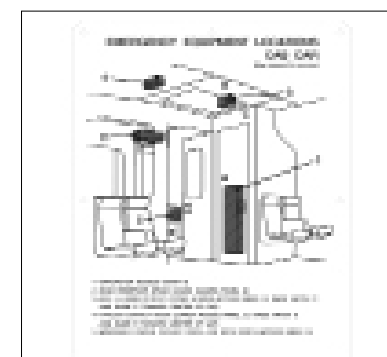
6128

9727



# PRODUCTS

- GRAPHICS - FULL INTERIOR & EXTERIOR INCLUDING LLEPM

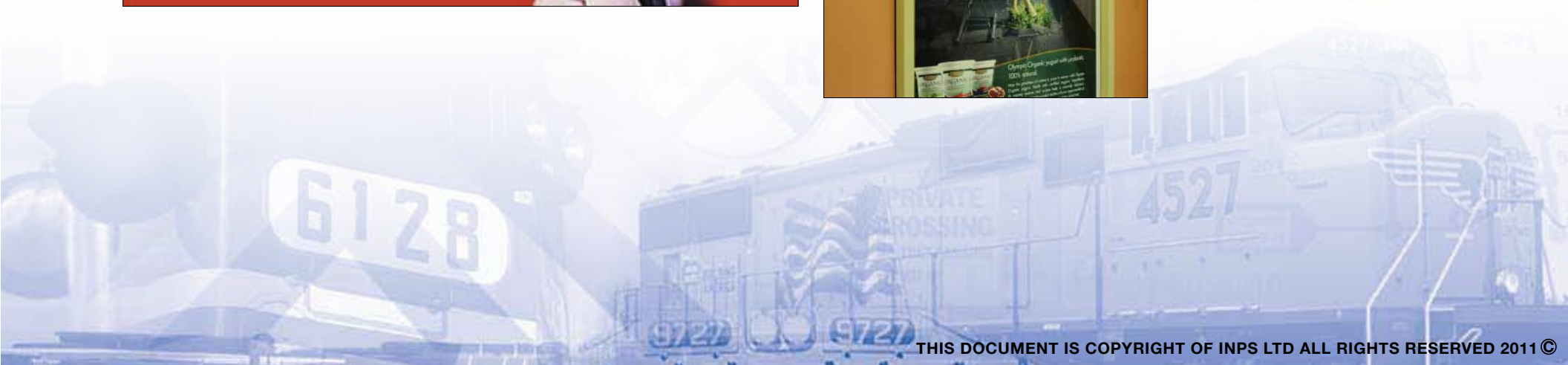






# PRODUCTS

- ADVERTISING FRAMES





# PRODUCTS

- WRAPS - INSTALL





## PRODUCTS

- WALLS - COVERS & TRIM, ETC.





## NEW PRODUCTS

- SKINS - MIRROR, DOOR, DI-NOC™, CUSTOM



# **INTERNATIONAL**

**NAME PLATE SUPPLIES LTD.**

*Thank you very much & we look forward to working  
with you in the future*

## **INPS Canada**

1420 Crumlin Road

London, Ontario, CA

N5V 1S1

Toll Free: 1-800-565-3509

TEL: 519-455-7647

FAX: 519-455-4409

[www.inps.ca](http://www.inps.ca)

## **INPS US**

2905A W.Marshall Ave.

Longview, TX USA

75604

TEL: 903-295-4835

FAX: 903-295-4839

[www.inpsusa.com](http://www.inpsusa.com)